

*Connect Cards*

# PEOPLE FIRST

We believe **TINY MOMENTS** design a **PEOPLE FIRST** culture. A culture where leaders take care of themselves and take great care of their team. At your next staff meeting or in the classroom, use these **Connect Cards** to engage with **PEOPLE**.

*-Phil Boyte and the Learning for Living team*



WHAT WAS YOUR  
DREAM JOB WHEN YOU  
WERE A KID?



SHARE SOMETHING  
THAT HAS INSPIRED  
YOU RECENTLY.

WHAT IS YOUR  
FAVORITE ROAD TRIP  
SNACK?



*What types of  
things make  
you feel most  
appreciated?*

★ ★ ★ ★ ★  
IF YOU COULD APPEAR  
ON ANY GAME SHOW,  
WHICH WOULD YOU CHOOSE?



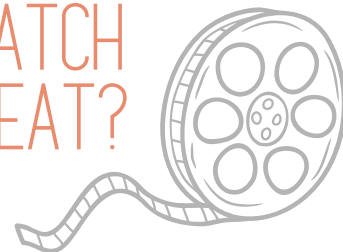
IF YOU COULD BE  
PRINCIPAL FOR THE  
DAY, WHAT WOULD  
YOU DO?

*What has  
made you  
laugh out loud  
recently?*



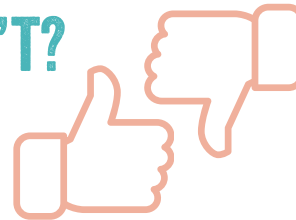
Tell me about  
your most  
impactful teacher.

WHAT MOVIE CAN  
YOU WATCH  
ON REPEAT?



What is something you wish you made more time for?

WHAT IS SOMETHING THAT MOST PEOPLE LIKE, BUT YOU DON'T?



Who is the person you text or call the most often and why?



If you could solve a major world problem, what would it be?

WHAT IS ANOTHER LANGUAGE YOU WISH YOU COULD SPEAK AND WHY?



What activities or hobbies did you gravitate toward during your school days?



What is one awesome thing about you?



If you could jump into a time machine, where would you go and why?

WHAT IS SOMETHING YOU HOPE TO ACHIEVE BY THE END OF THIS YEAR??

